

COMPANY PROGRAMME

Preparing the workforce of the future – developing adaptability, an entrepreneurial mindset, and employability skills



FACT FILE

Age Range:

Year 9 to Year 13

Delivery:

Flexible to meet the needs of your school/college from 12 weeks up to one academic year

Supports Gatsby Benchmarks of Good Careers guidance:

- | | |
|---|----|
| 1. Stable careers programme | ●● |
| 2. Learning from career & labour market information | ● |
| 3. Addressing the needs of each student | ● |
| 4. Linking curriculum learning to careers | ● |
| 5. Encounters with employers & employees | ●● |
| 6. Experiences of workplaces | ● |
| 7. Encounters with further & higher education | ● |
| 8. Personal guidance | ● |

● contributes towards

●● delivers

Company Programme

Company Programme provides a real-life learning opportunity that introduces young people to the realities of the world of work.

Students set up and run their own student company. They make all the decisions about their business, from deciding on the company name and product to managing the company finances. Students sell to the public with pop up shops at YE Trade Fairs and on YE Market Place, the dedicated online sales platform. Participants gain the practical business experience, adaptability, entrepreneurial mindset and employability skills needed to secure successful futures.

Step by step guidance is available online with videos and resources to support students to run their student company. All this takes place with the support of a Volunteer Business Adviser who facilitates the programme and brings a wealth of business knowledge and expertise. All YE Volunteer Business Advisers are DBS checked and have completed safeguarding training.

Student companies can take part in local competitions and the opportunity to battle it out to be crowned UK YE Company of the Year and to go on to the European Company Programme Final.

Company Programme supports students to gain confidence, practical know-how and attributes to prepare for work and provides interesting and relevant content to include in applications to education and training providers or future employers. By taking part in an online self-assessment, students receive a certificate to evidence the development of employability skills.

Supporting Schools and Colleges

- Contributes to a stable, structured careers programme by providing an opportunity to prepare young people for work by developing enterprise and employability skills. It develops confidence to compete in the labour market and develops entrepreneurial skills for self-employment
- Provides evidence of the Gatsby Benchmarks of good career guidance
- Provides encounters with employers and employees, an opportunity for students and the school to develop professional networks
- Supports Ofsted success by contributing to judgements on the effectiveness of leadership, management, personal development and welfare by preparing students for the next stage of their education, training or employment
- Supports a wide range of business studies and applied business qualifications
- Links career, enterprise and independence skills learning to a range of curriculum subjects including English, mathematics, design and technology, citizenship and humanities
- Extends opportunities to young people on an alternative curriculum providing a flexible, engaging learning opportunity which promotes independence skills

Learning Outcomes from Company Programme

- Develop confidence, an enterprising mindset and employability skills for successful transitions to the next stage of life
- Gain first-hand experience of work, job roles and working as a team
- Recognise the qualities and skills needed for employability and create positive accounts of these skills
- Gain self-awareness to recognise personal strengths and areas for personal development
- Understand self-employment/entrepreneurship as a career option
- Develop interesting and relevant content for inclusion in applications to education/training providers and future employers
- Develop a professional network
- Set SMART goals and plan next steps to achieve successful futures
- Fulfil the skills element of the Duke of Edinburgh Award Scheme

Encounters with Employers and Employees

Young Enterprise has access to over 7000 Business Volunteers from employers of all sizes, and from all sectors. Connecting and interacting with local employers and employees is a core part of the delivery of Company Programme. Our volunteers help young people to build their broader understanding of the workplace and employment and provide the opportunity for students to learn about what skills are required to make successful transitions to the next stage of their life.

Contributing Evidence against the Gatsby Benchmarks of Good Career Guidance

Company Programme supports schools/colleges to evidence provision of Good Career Guidance against the Gatsby Benchmarks. Young Enterprise programmes encourage the development of an enterprise mindset and approach which is needed in education and employment in order that all young people reach their potential.



“I have become a lot more confident in being able to present my ideas and work and lead a team, which I’m sure will be a massive benefit when joining the real world of work”

Student

“Company Programme has been a priceless and life changing experience. The programme has taught me the importance of networking, communication skills and about taking calculated risk”

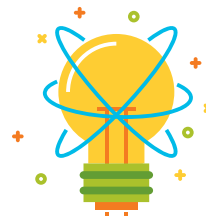
Student

THE IMPACT OF COMPANY PROGRAMME



86%

teachers agreed that Company Programme improved students' employability skills



70%

teachers agreed that Company Programme raised students' career aspiration as they were able to understand what various roles entail



88%

teachers agreed that Company Programme raised awareness of students' strengths and weaknesses



94%

Volunteer Business Advisers agreed that supporting students allowed them to share their career experiences



72%

of students said their Volunteer Business Adviser had helped them understand the world of work



74%

of young people developed four or more competencies, with work readiness and self-esteem showing the most improvement